



## NATIONAL POWER CORPORATION

**SUPPLEMENTAL / BID BULLETIN NO. 1**  
to the Bid Documents for the:

**SUPPLY AND DELIVERY OF TWO (2) SETS HEAT EXCHANGER FOR THRUST BEARING IN PULANGI IV HEP UNDER PR NO. MG-PAT23-002 / PB231003-CM**

**26 SEPTEMBER 2023**

All prospective bidders and authorized copy holders of the Bid Documents of the above - mentioned project are hereby advised of the changes in the Bid Documents, to wit:

### A. SECTION III - BID DATA SHEET (ITB CLAUSE 5.3):

FROM	TO
For this purpose, similar contracts shall refer to supply and delivery of Heat Exchanger (Shell and Tube) for Power Plants or Mechanical Parts / Components / Equipments for Hydro-Electric Power Plants.	For this purpose, similar contracts shall refer to <u>SUPPLY AND DELIVERY OF HEAT EXCHANGER (SHELL AND TUBE).</u>

### B. DRAWINGS:

*"Please see attached page."*

All other terms and conditions shall remain the same.

For the information and guidance of all authorized copy holders of the Bid Documents and prospective bidders.

For the Bids and Awards Committee:

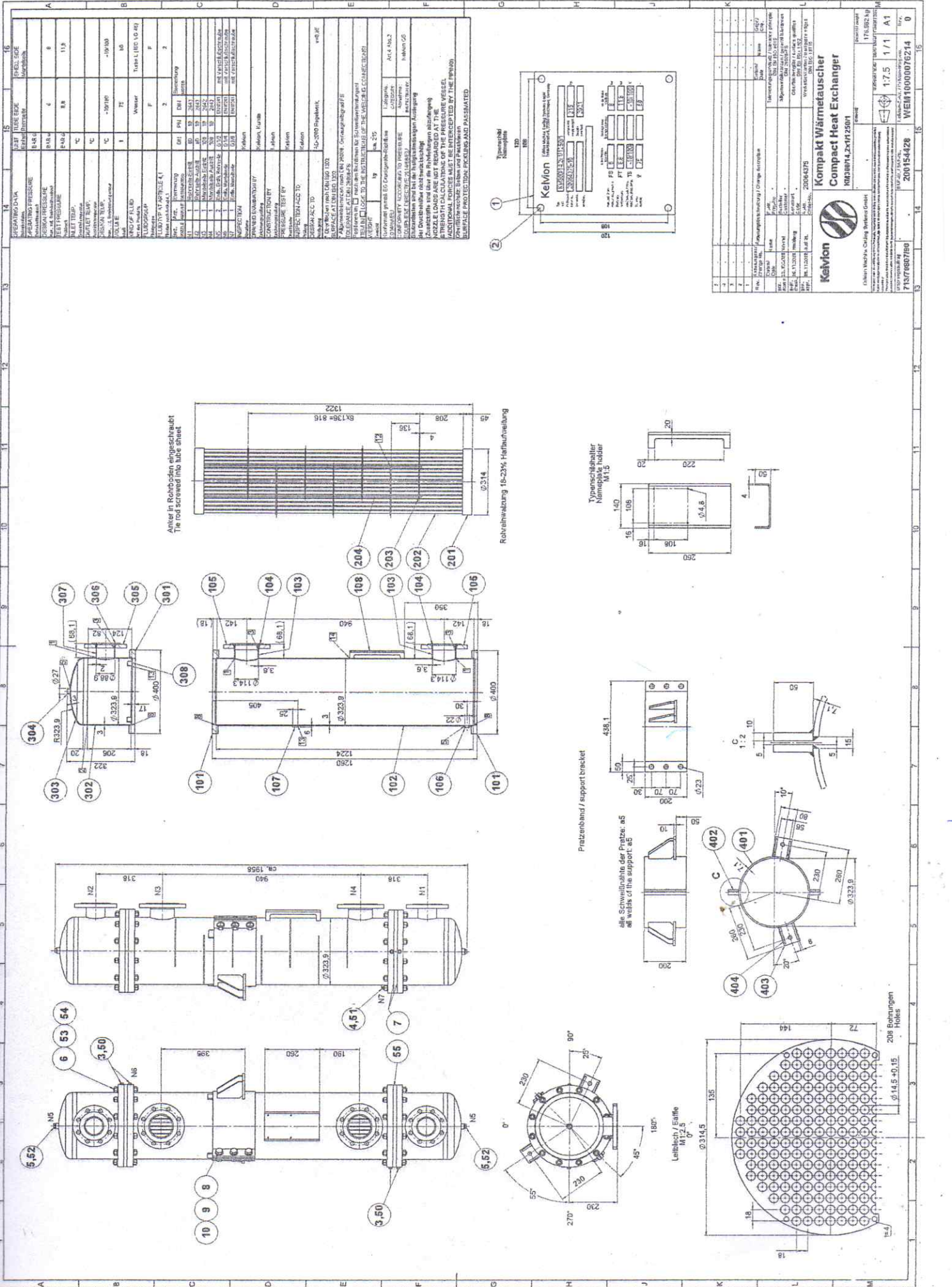
**ATTY. MELCHOR P. RIDULME**

Vice President, Office of the Legal Counsel and  
Chairman, Bids and Awards Committee



**NATIONAL POWER CORPORATION**  
BIR Road cor. Quezon Avenue, Diliman  
Quezon City 1100, Philippines  
Tel. Nos. (632) 8921-3541 to 80 • Fax No. (632) 8921-2468  
Website: [www.napocor.gov.ph](http://www.napocor.gov.ph)





Anker in Rohrboden eingeschräubt  
The rod screwed into tube sheet

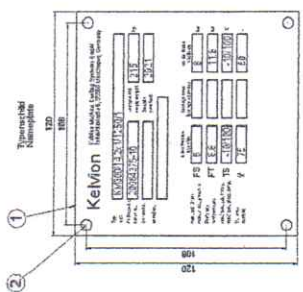
Rehradwalung 16-23% Halbwellung  
Helical winding 16-23% half-wave

Freizeuband / support bracket

alle Schweißnähte der Patze, a5  
all welds of the support, a5

Leibblech / Endflie  
M12,5

208 Bohrungen  
Holes



1	2	3	4	5	6	7	8	9	10	11	12	13	14	15	16
<p>Fig. 1: Material / Material / Design / Drawing</p> <p>Fig. 2: Design / Design / Design / Design</p> <p>Fig. 3: Design / Design / Design / Design</p> <p>Fig. 4: Design / Design / Design / Design</p> <p>Fig. 5: Design / Design / Design / Design</p> <p>Fig. 6: Design / Design / Design / Design</p> <p>Fig. 7: Design / Design / Design / Design</p> <p>Fig. 8: Design / Design / Design / Design</p> <p>Fig. 9: Design / Design / Design / Design</p> <p>Fig. 10: Design / Design / Design / Design</p> <p>Fig. 11: Design / Design / Design / Design</p> <p>Fig. 12: Design / Design / Design / Design</p> <p>Fig. 13: Design / Design / Design / Design</p> <p>Fig. 14: Design / Design / Design / Design</p> <p>Fig. 15: Design / Design / Design / Design</p> <p>Fig. 16: Design / Design / Design / Design</p>															

**Kelvion**  
Kompakte Wärmeübertrager  
Compact Heat Exchanger  
KMBWH4.2x17.2501

7137680780 200154428 WEIM10000076214